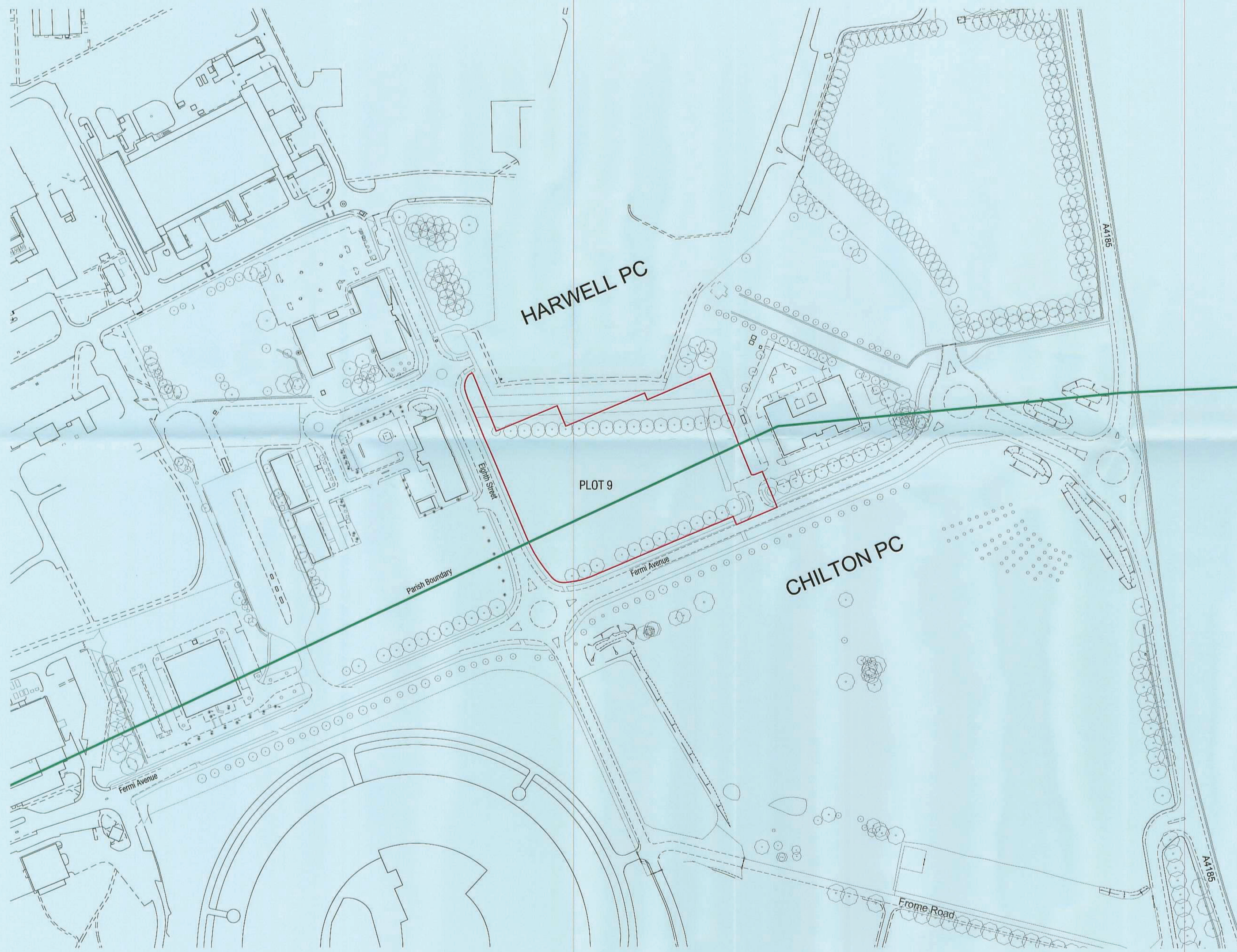


notes  
 this drawing and design is the copyright of aja architects ip and must not be reproduced in part or in whole without prior written consent. contractors must verify all dimensions on site before commencing work or preparing shop drawings if in doubt ASK.



no.	date	revision	by



aja architects ip  
 1170 Elliott Court  
 Herald Avenue  
 Coventry Business Park  
 COVENTRY CV5 6UB  
 T: 024 7625 3200  
 F: 024 7625 3210  
 E: aja@aja-architects.com  
 W: www.aja-architects.com

aja architects ip is a limited liability partnership registered in England No. OC326721

client



project

Proposed R&D Process Building  
 Plot 9  
 Harwell Science Park

drawing

Site Location Plan

11/02335/FUL (A1)

scale 1:1250 drawn tch

checked date 02/12/11

no

5192 - 065  
 PLANNING